

With improved functions and specifications, the SRP-350plus is a leapforward in technology representing BIXOLON's commitment to supply the best and the right product for our customers and our partners

## Advanced Thermal Receipt Printer

# SRP-350plus

a Better Solution  
for your Business™



### SRP-350plus HIGHLIGHTS

- **Fast printing speed of up to 200mm per second (30% faster than the SRP-350)**
  - Optimized mechanical components and software to enable fast and stable printing
  - Improved CPU (32 Bit), Bigger Memory (4 M Bits) and increased Receive Buffer(64K byte)
- **USB 2.0 on board standard**
  - High speed USB 2.0(480 Mbps)
- **Long lasting Auto-cutter up to 1.8 million cuts with easy paper-jam removal**
- **Customer oriented software tools provided**
  - Firmware download
  - Virtual Memory Switch Manager
  - NV image download tool
- **2D barcode printing support**
  - PDF417
  - QR Code
- **Two different models**
  - SRP-350plusC (with auto-cutter)
  - SRP-350plusA (without auto-cutter)

Anchor Data Systems (NI) Ltd

Unit 36 North City Business Centre, Duncairn Gardens, Belfast, BT15 2GG

Tel: 028 9074 0315 [www.AnchorData.co.uk](http://www.AnchorData.co.uk) [enquiries@AnchorData.co.uk](mailto:enquiries@AnchorData.co.uk)

**BIXOLON®**

SAMSUNG

# Advanced Thermal Receipt Printer SRP-350plus



## Fast printing of texts and images

To speed up customer transactions without sacrificing performance, the SRP-350plus prints texts and graphics at a consistent speed of 62 lines per second which is amazingly 30% faster than the industry leading the SRP-350. Reduced data processing time has been achieved by utilizing a more powerful CPU; increases in performance have been made by upgrading mechanical components and optimizing software. The SRP-350plus guarantees smooth and speedy printing without any interruptions during printing

### Print

**Printing Method** : Direct Thermal

**Printing Speed** : 200mm/sec (61.7LPS)

**Resolution**

-180dpi (7dot/mm)

-203dpi (8dot/mm) : Optional

**Character Size**

- Font A: 12 x 24

- Font B: 9 x 24

**Character Set**

- Alphanumeric Character: 95

- Extended Graphics: 128 x 33 page (1 space page)

- International Character: 32

**Barcodes**

- 1D: EAN-13, EAN-8, Code 39, Code93,

Code128, ITF, Coda Bar, UPC-A, UPC-E

- 2D : PDF417, QR Code

**Flash Memory** : 16 bit

### PAPER

**Paper Width** : 79.5mm ± 0.5mm

**Paper Roll Diameter** : Max.  $\phi$  83.0mm

**Paper Supply Method** : Easy paper loading

**Sensor** : Paper Near End Sensor, Paper End Sensor

Anchor Data Systems (NI) Ltd

Unit 36 North City Business Centre, Duncairn Gardens, Belfast, BT15 2GG

Tel: 028 9074 0315 www.AnchorData.co.uk enquiries@AnchorData.co.uk

## Main features with specifications for the SRP-350plus

### USB 2.0 on board standard

This model has USB 2.0 interface on the main board as a standard and has an additional interface slot for an optional Serial, Parallel or Ethernet interface card.

Not only does the customer have the choice to use Serial, Parallel or Ethernet interfaces, the dual interface option protects the customer's future investment if they decide to change POS hardware which is equipped with a USB 2.0 interface.



### High-Speed USB 2.0

USB technology in the POS market is getting increasingly popular due to the advantages in convenience and speed. New POS systems are starting to be equipped with USB 2.0 but most thermal printers in the market support only support version 1.1 of USB whose full speed is 12 Mbps. BIXOLON SRP-350plus now supports the new USB 2.0 standard with a High Speed of 480 Mbps. The USB 2.0 interface of the SRP-350plus is retro compatible to USB 1.1

### INTERFACE CARDS

**USB 2.0 on board standard**

RS-232C, IEEE-1284, USB, RS-485, Ethernet(10/100 base T), Bluetooth

### Long lasting Auto-cutter

The new auto-cutter of the SRP-350plus an exceptionally high MCBF value of more than 1.8 million cuts - long-term use without impact on quality or speed are guaranteed. Its mechanical design, its sturdy cutting blade and also the housing were improved over the standard model to ensure even longer operation without failure. In addition it also has a manual wheel conveniently positioned for easy clearing of the paper jam.



### Customer oriented Software Tools

The SRP-350plus is supported by a rich pool of utility software. The Firmware download tool, NV image tool and Virtual Memory Switch Manager (VMSM) are available with more software being added in the future. These new customer oriented utilities enable the users to directly access logo download, code page selection, firmware download and the other printer settings more easily and with No Hardware setting changes.

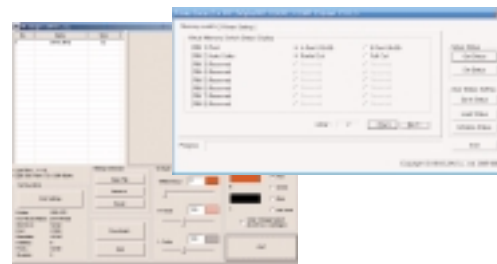
### DRIVERS

Win 95 / 98 / ME / 2000 / NT / XP /

2003 server / VISTA, OPOS, JPOS

### EMULATION

ESC / POS



### Other value-added Features

- Two color printing
- 33 code pages included in the standard firmware(no update necessary, to be set by VMSM)
- Easy Firmware and Logo download using any interface, Serial, Parallel or USB
- 203 dpi printing model available
- Multi-Power AC adaptor (100~240V, 50/60Hz) Included
- Accessories such as splash proof cover and internal/external buzzer are available
- Compact design and size facilitating the installation in all areas(Wall mount bracket option)

### DRAWER PORT

2 ports Support

### POWER SUPPLY (ADAPTER)

: AC 120~230V ± 10% (include) DC 24V, 2.3A

### DIMENSIONS

145(W) x 195(L) x 146(H) mm

### LANGUAGE

Customer Language Support